

PARA Company LLC Core Support Air Chucks and Air Shafts



- Strip, Leaf, or Lug style Aluminum hollow bore core support / air chucks and air shafts. (Strip and leaf style pictured).

- 3" and 6" ID cores standard.

- Thru bore up to 40mm / 1.625"

- Plunger style inflate valve or button style

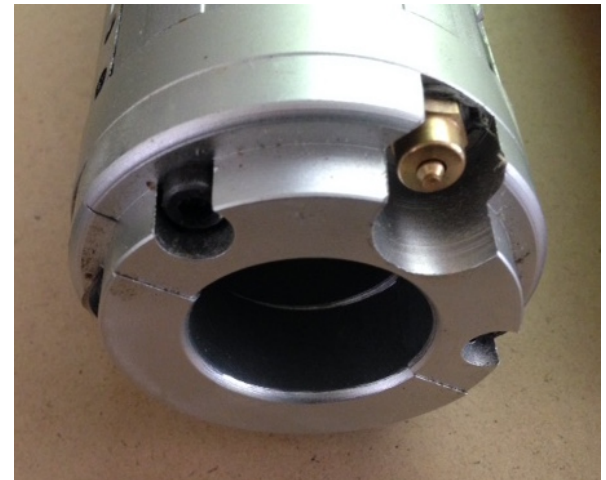
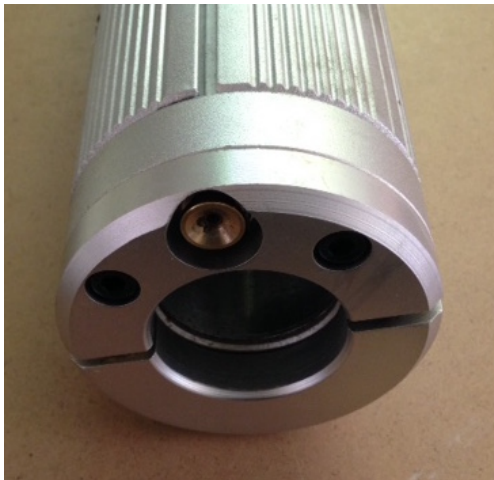


- Split flange clamping (both ends), to your support shaft

- No marring of support journal

- Long lasting bladders

- General application specifications:
 - Maximum roll weights 500# each
 - Maximum process speed 1000fpm



Call or email for quote

PARA Company LLC
763.473.2757
sales@PARA-Company.com

Call or email for quote